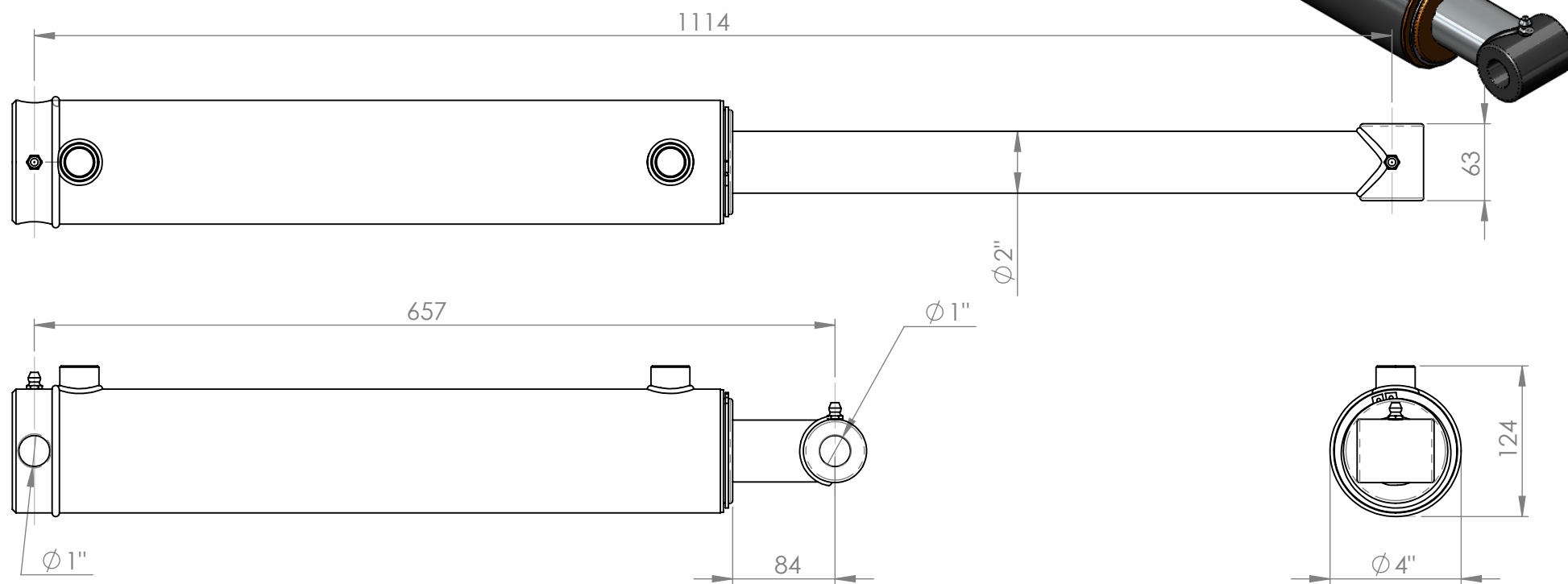


DO NOT SCALE

28/10/2014



The information contained in this drawing is proprietary to MOTUS and shall not be reproduced or disclosed in whole or in part or used for any design or manufacture except when such user possesses direct written authorisation from MOTUS

Ram Phone: 0800 66 88 74
Phone: +64 6 879 8590
sales@motushydraulics.co.nz
www.motushydraulics.co.nz

DESCRIPTION	PC30		
SEAL KIT No:	SK350200		
FORCE EXTENSION	12560kg @ 2250psi	FORCE RETRACT	9420kg @ 2250psi
STROKE	457mm	PORTS	3/4" FMBSP
CLOSED CENTRES	657mm	BASE MOUNT	6525-1
OPEN CENTRES	1114mm	SHAFT MOUNT	6590-1